

STAINLESS STEEL INSTALLATION GUIDE

TOOLS REQUIRED FOR INSTALLATION



ELECTRIC DRILL &
DRILL BIT



SPIRIT LEVEL



CORDLESS
SCREWDRIVER & CROSS POINT
SCREWDRIVER
(BIT PH2)



METRIC RULER



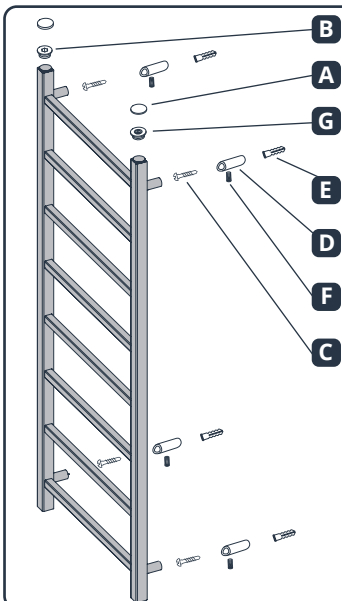
HAMMER



STEP LADDER
(FOR HIGH PRODUCTS)



ALLEN KEY



Installation information in this section includes below products
ADONIS, BLIZZARD, BLUEBELL, CARISMA, CORVUS, DIVA, ELEGANCE,
ELITE, FALCON, GEMINI, HERA, JUPITER, KAYRA, LOFT, NEPTUN, LINA,
NIRVANA, OLYMPOS, SONYA, REFLECTION, TAURUS, TRENDY, TRUVA,
VOLGA, ZENITH, LARIS, SAMOS, SPIN, STEP, EYE, MIXOLOGY, OLVIN

CONTENT OF MOUNTING SET

Decorative Cap (x2)
(Only for mirror finished products)

A

Blind Plug (x1)

B

Air Vent (x1)

G

Wall Mounting
Screw (x4)

C

Wall Mounting Bracket (x4)

D

Wall Plug (x4)

E

Setscrew (x4)

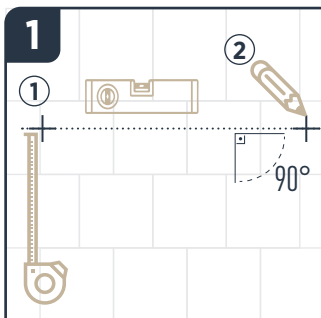
F

SPECIAL CASES

* Mounting elements, Decorative Cap (A) and Blind Plug (B) are **not included** in the installation set for **Spin, Step, Eye, Mixology and Olivin**.

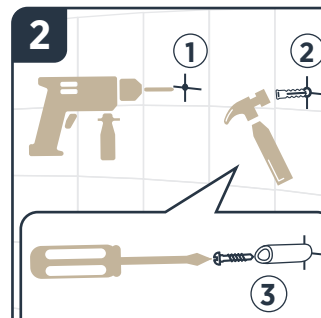
* x3 pieces of Wall Mounting Screw (C), Wall mounting Bracket (D), Wall Plug (E) and Setscrew (F) are included in the installation set for **Step**.

INSTALLATION



1- Adjust the height of your radiator by using a metric ruler.

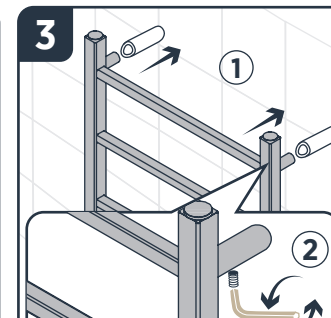
2- Set the location of your radiator as desired, align with the ground by using a spirit level and mark the position of the wall mounting brackets.



1- Drill holes (Ø 10 mm) into the spots you have marked.

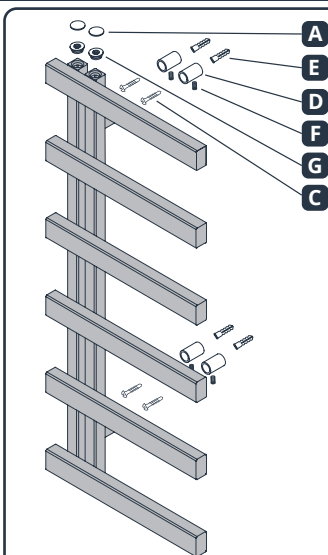
2- Nail the wall plugs (E) in the holes by using a hammer.

3- Screw the wall mounting brackets all the way to the holes with the help of a screwdriver.



1- Place your radiator into the wall mounting brackets (D).

2- Insert the setscrews (F) into the slots on the mounting brackets (D), adjust the distance between the wall and your radiator then tighten the setscrews by using an Allen key (M3).



Installation information in this section includes below products
ASOS, DAPHNE, KEOPS, LARISSA, MERCURY, ORCA, RADO,
SIERRA, STORM, TERRA, VISTA, PORTO, MYRA, FAME,
WAVE, CHARM, BLAZE, FLAKE

CONTENT OF MOUNTING SET

Decorative Cap (x2)
(Only for mirror finished products)

A

Wall Mounting
Screw (x4)

C

Wall Mounting Bracket (x4)

D

Wall Plug (x4)

E

Setscrew (x4)

F

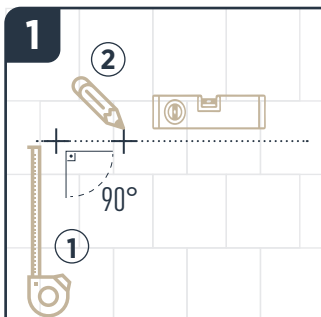
Air Vent (x2)

G

SPECIAL CASES

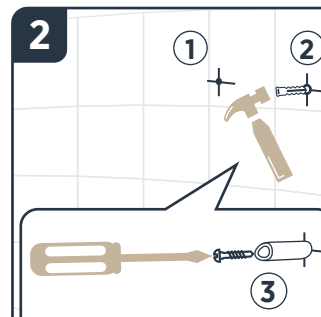
* x3 pieces of Wall Mounting Screw (C), Wall mounting Bracket (D), Wall Plug (E) and Setscrew (F) are included in the installation set for **Flake**.

INSTALLATION



1- Adjust the height of your radiator by using a metric ruler.

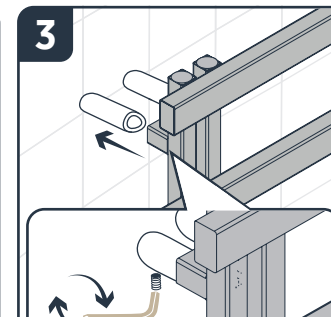
2- Set the location of your radiator as desired, align with the ground by using a spirit level and mark the position of the wall mounting brackets.



1- Drill holes (Ø 10 mm) into the spots you have marked.

2- Nail the wall plugs (E) in the holes by using a hammer.

3- Screw the wall mounting brackets all the way to the holes with the help of a screwdriver.



1- Place your radiator into the wall mounting brackets (D).

2- Insert the setscrews (F) into the slots on the mounting brackets (D), adjust the distance between the wall and your radiator then tighten the setscrews by using an Allen key (M3).



WARNING

- Place your radiator at least 12.5 cm above the floor.
- Provide insulation by wrapping PTFE tape on the threads before installing the valves.
- Apply silicone seal fluid to all treaded parts containing o-rings.
- Connect your radiator to the utilities after following all the installation steps in the manual.
- After connecting to the utilities, do not forget to discharge the trapped air inside the radiator.



R.EYS.KK.00115

R.EYS.KK.00115_installation guide_stainless steel_ser1-2_english_baon



19.02.2019 Rev:02
R.EYS.KK.00115